

Distro : **MX Linux**
Wikipedia : https://en.wikipedia.org/wiki/MX_Linux
Website : <https://mxlinux.org/>
Twitter : [@MX_Linux](#)
Status : May 2021
Author : [summertime tech](#)
CPU : Tested on x86 – 64bits architecture

Installable .iso:

- Complete including Update mid April
- Default desktop = Xfce (not mentioned in iso)
- Report about: see Annex-checklist

Conclusion:

- Because of no(!) built-in telemetry this distro is suitable for use in DEV- & TEST- & ACC- & PROD environments.
- Only 1x package "popularity-contest" is in Repo which seems to be a glitch in the matrix caused by maintenance. To block specific packages: <[read article](#)> ; for long-term solution ask/tweet distro to remove telemetry package from Repo
- Distro is "Privacy by Design" for details: <[read here](#)>

Cat.0 Telemetry

- [MX-19.3_x64.iso](#)

Great, this distro is how Linux supposed to be! See annex-1

Need cleanup repo: Cat.2

- [MX-19.3_KDE_x64](#)

Great, this distro is how Linux supposed to be! See annex-2

Need cleanup repo: Cat.2

Cat.1 Telemetry

- N/A

Cat.2 Telemetry

- [MX-19.3_x64.iso](#)

"popularity-contest" telemetry in Repo; not installed

- [MX-19.3_KDE_x64](#)

"popularity-contest" telemetry in Repo; not installed

Cat.3 Telemetry

- N/A

Cat.4 Telemetry

- N/A

Remarks:

- Instructed by KDE-org all distros desktops have to create forced dependencies with cat.4 KUserFeedback telemetry if user is to install KDE software like Kate, Dolphin. But MX Linux has not made this forced dependency in Repo. See screenshots annex below.

Annex-checklist

Implementation of Telemetry and "Spying on User"-software within Linux desktop domain is expanding and as such a moving target. Therefore investigation results can vary. Occurrence of known software situation as listed below are checked at date: see "Status" in header this document.

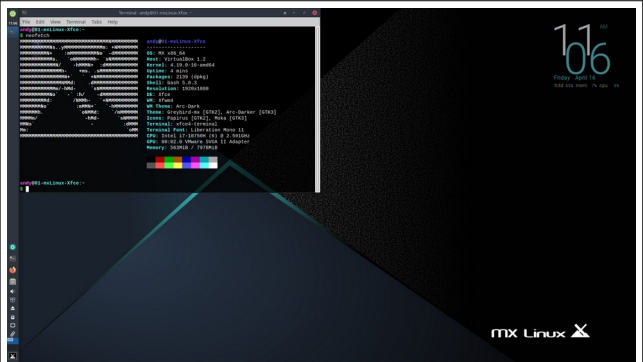
- KUserFeedback Telemetry package (KUFB)
- Dolphin: target KUFB track& trace
- Kate: target KUFB track&trace
- Discover Software Store KDE Plasma: target KUFB track&trace
- popularity-contest: reporting to Distro HQ
- Crash Report: reporting to Distro HQ
- Bug Report: reporting to Distro HQ
- Connectivity Checking: regular reporting to Distro HQ
- Info Update: reporting to Distro HQ
- User Location: reporting to Distro HQ
- OS Settings: Cookies & browserID reporting to Browser HQ

About:

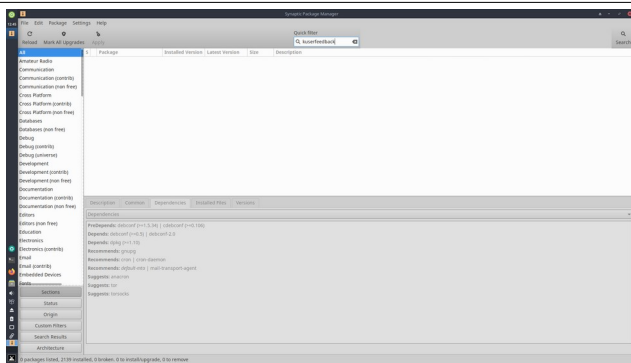
- Origin & instruction to distro of KUFB & App targeting
→ KDE.org
- Implementation & control of KUFB & App targeting
→ Distro.org
- Survey package "popularity-contest": <https://popcon.debian.org>
- Crash Report: <https://launchpad.net/ubuntu/+source/apport>

Annex-1

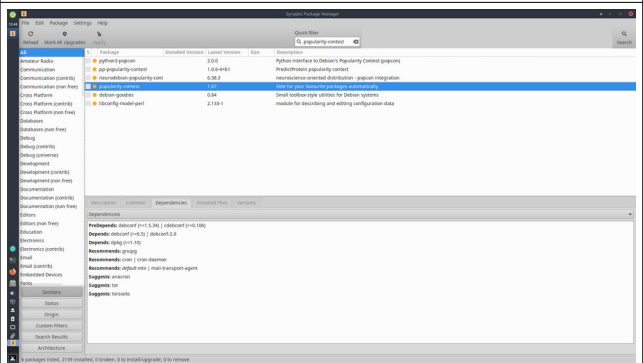
MxLinux Xfce
2021-04



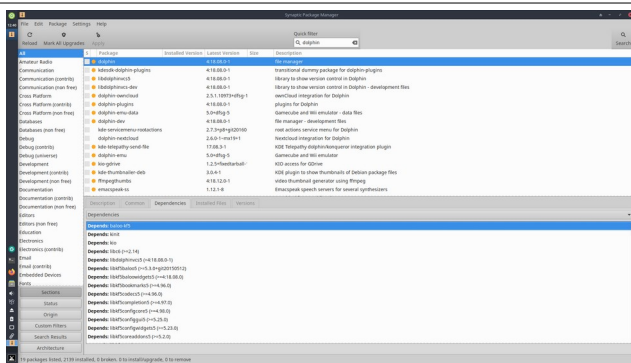
Img1 neofetch



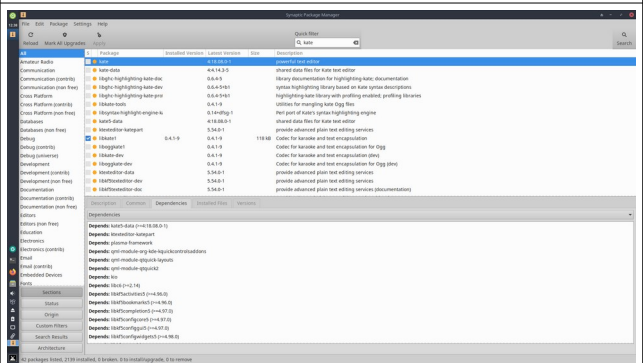
Img2 kUserFeedback not in Repo



Img3 popularity-contest in Repo

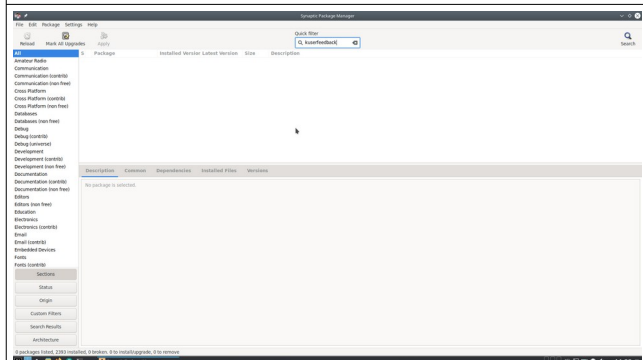
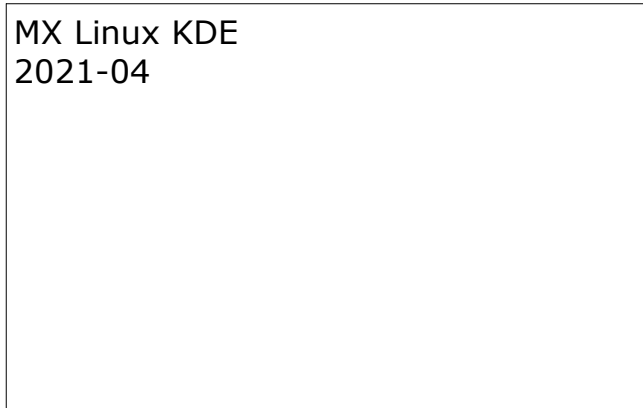


Img4 dolphin in Repo – No KuserFeedback dependency

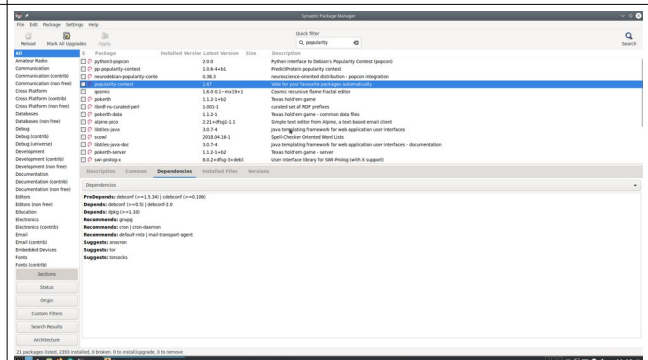


Img5 kate in Repo – No KuserFeedback dependency

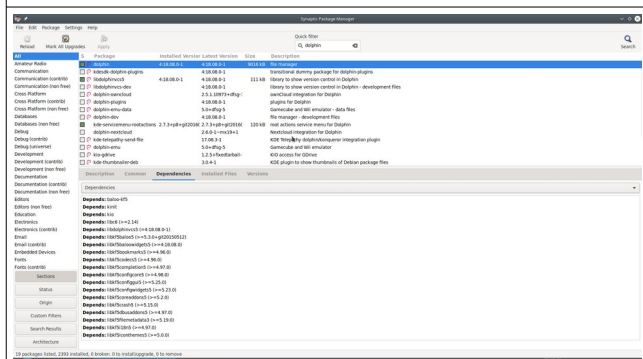
Annex-2



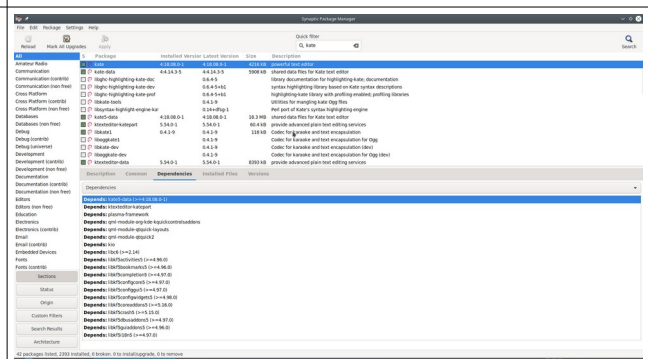
Img2 No KUserFeedback in Repo



Img3 popularity-contest in Repo



Img4 dolphin installed – no KuserFeedback dependency



Img5 kate installed – no KuserFeedback dependency

Linux distros categorized:

- [Cat.0 is having no telemetry](#)



Zero telemetry is the reason for companies, governments, organisations and users all over the world to adopt & migrate to "Privacy by Design" Linux.

- [Cat.1 software for location telemetry built-in](#)



As is downloadable .iso has Usage statistics telemetry and is not suitable for Production Environments & Personal use. Installation need change of settings or Command Line Interface CLI & privacy health check after Updates.

- [Cat.2 is Cat.1 & user survey telemetry built-in](#)



As is downloadable .iso has Survey telemetry and is not suitable for Production Environments & Personal use. Installation need change of settings or Command Line Interface CLI & privacy health check after Updates.

- [Cat.3 is Cat.2 & QI collect & analyze user data telemetry built-in](#)



Quality Improvement (QI) via collect & analyze user data built-in downloadable .iso is not suitable for Production environment & Personal use. Installation need change of settings or Command Line Interface CLI & privacy health check after Updates.

- [Cat.4 above & track/trace user activity & content telemetry built-in](#)



Distro downloadable .iso not suitable for Production Environments & Personal use. Installation has sophisticated non deleteable non stoppable "spy on user" engine. Either built-in (KDE) or in repo's.