

Distro : **ElementaryOS**  
Wikipedia : [https://en.wikipedia.org/wiki/Elementary\\_OS](https://en.wikipedia.org/wiki/Elementary_OS)  
Website : <https://elementary.io/>  
Twitter : <https://twitter.com/elementary>  
Status : March 2021  
Author : [summertime tech](#)  
CPU : Tested on x86

### Offline installable complete .iso:

- Desktop is Pantheon
- elementaryos-5.1-stable.20200814.iso
- Including Update mid April

### Cat.0 Telemetry

- N/A – see Cat.1 & Cat.2

### Cat.1 Telemetry

- System Settings App Privacy “Location Services default <on> → User set to <off> – see below pic1: remark: in default installation there is no App which uses this feature.

### Cat.2 Telemetry

- “popularity-contest” telemetry in Repo; not installed – see below pic3

### Cat.3 Telemetry

- N/A

### Cat.4 Telemetry

- N/A

### Remarks:

- Pic2: If user installs KDE software Kate or Dolphin then NO dependencies regarding Cat.4:KuserFeedback – great!

## Linux distros categorized:

### – [Cat.0 is having no telemetry](#)



Zero telemetry is the reason for companies, governments, organisations and users all over the world to adopt & migrate to "Privacy by Design" Linux.

- [Cat.1 software for location telemetry built-in](#)



As is downloadable .iso has Usage statistics telemetry and is not suitable for Production Environments & Personal use. Installation need change of settings or Command Line Interface CLI & privacy health check after Updates.

- [Cat.2 is Cat.1 & user survey telemetry built-in](#)



As is downloadable .iso has Survey telemetry and is not suitable for Production Environments & Personal use. Installation need change of settings or Command Line Interface CLI & privacy health check after Updates.

- [Cat.3 is Cat.2 & QI collect & analyze user data telemetry built-in](#)



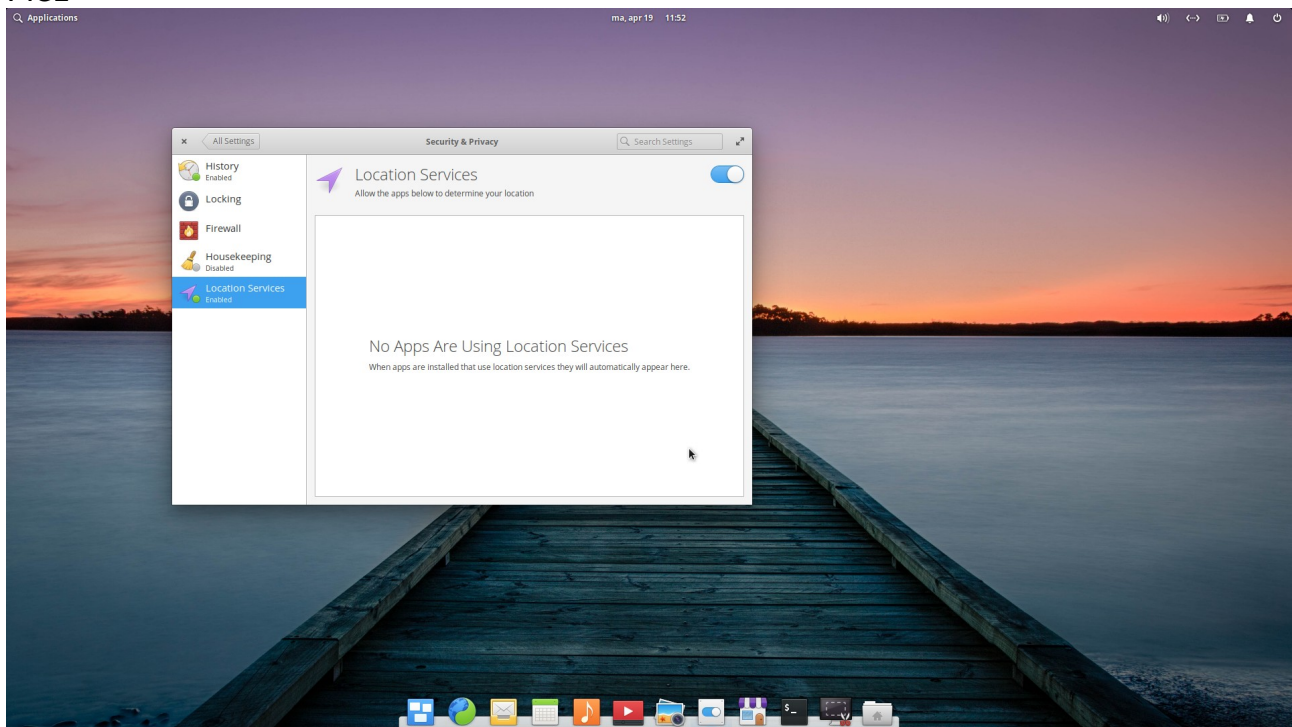
Quality Improvement (QI) via collect & analyze user data built-in downloadable .iso is not suitable for Production environment & Personal use. Installation need change of settings or Command Line Interface CLI & privacy health check after Updates.

- [Cat.4 above & track/trace user activity & content telemetry built-in](#)

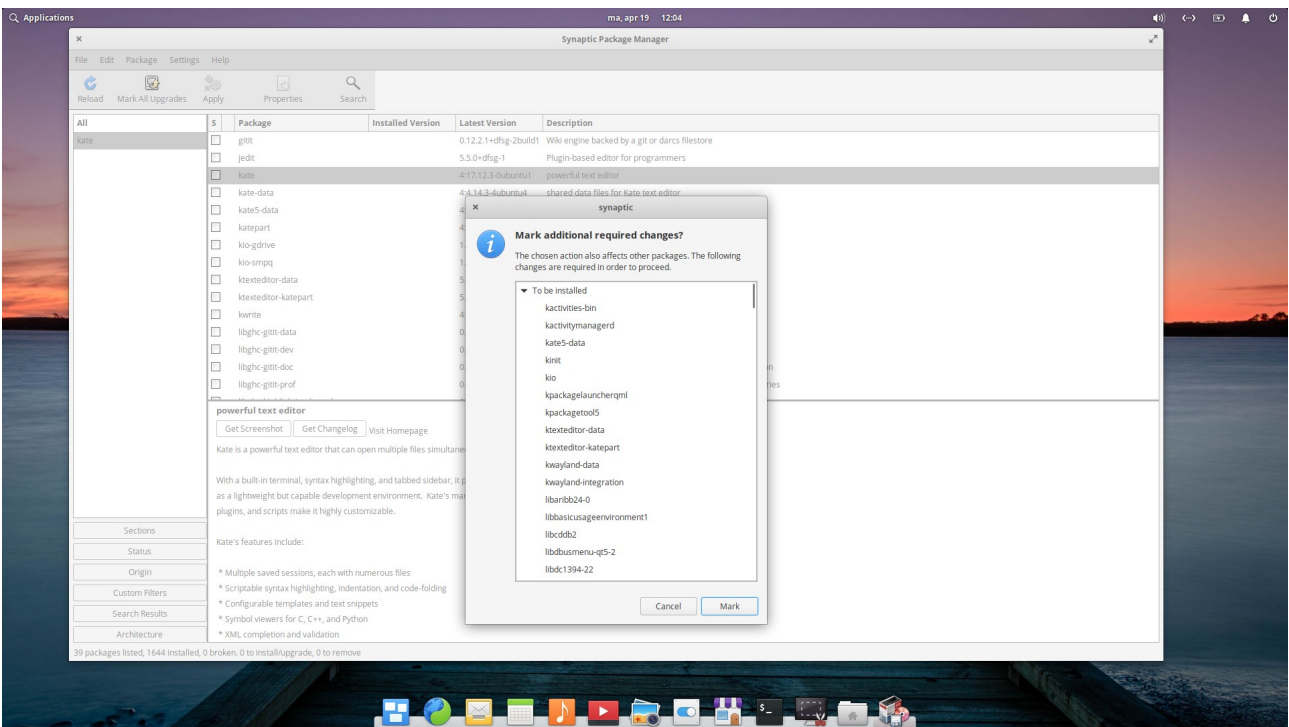
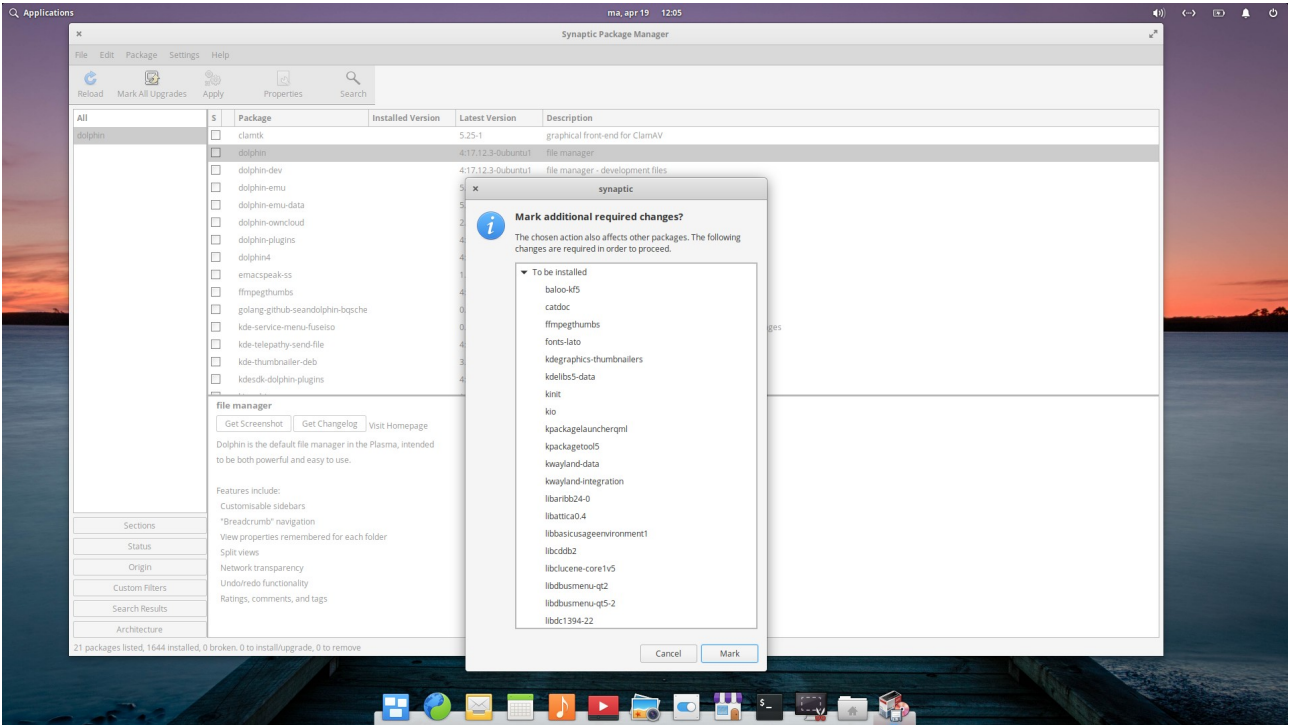


Distro downloadable .iso not suitable for Production Environments & Personal use. Installation has sophisticated non deleteable non stoppable "spy on user" engine. Either built-in (KDE) or in repo's.

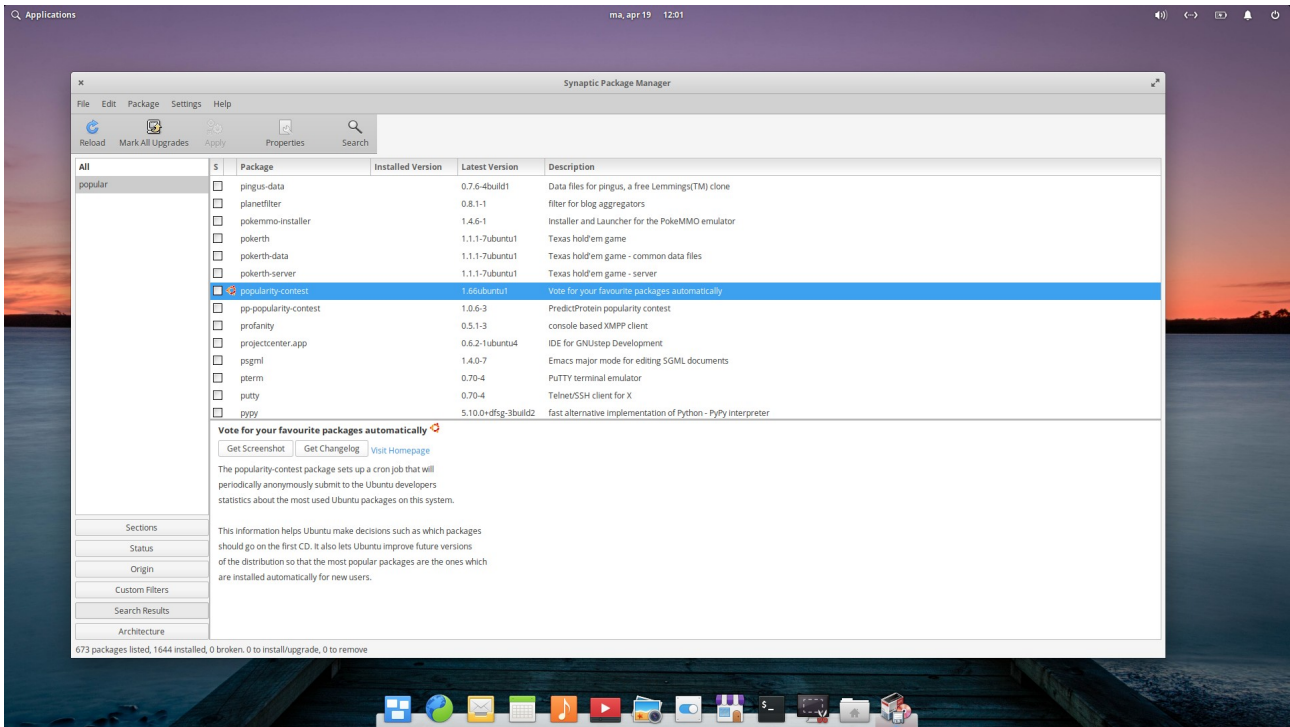
Pic1



Pic2:



### Pic3:



<eof>