

Distro : **openSUSE**
Option : Tumbleweed GNOME
Wikipedia : <https://en.wikipedia.org/wiki/OpenSUSE>
Website : <https://www.opensuse.org/>
Twitter : <https://twitter.com/opensuse>
Status : May 2021
Author : [summertime tech](#)
CPU : Tested on x86

Installed as mentioned below .iso:

- openSUSE Tumbleweed – up-to-date [rolling release](#) distribution
- openSUSE-Tumbleweed-DVD-x86_64-Snapshot20210505-Media.iso
- During “GNOME” installation Online Repos activated
- An other openSUSE version is LEAP: an [LTS](#)-style distribution focused on stability which shares the code base SUSE Linux Enterprise (SLE), effectively making LEAP a non-commercial version of its enterprise-grade operating system.
- In time most Tumbleweed developments might be implemented in LEAP. Therefore focus is on Tumbleweed. Also, technically Tumbleweed is the basis for MicroOS [edge computing](#) or [container runtime](#). And also for Kubic a Container as a Service Platform.

Conclusions desktop GNOME:

- ➔ Desktop has no built-in telemetry. Distro is suitable for use in DEV-, TEST-, ACC- & PROD environments. BUT... BUT... BUT...
- ➔ BUT: in the past openSUSE stripped all commonly GNOME used telemetry packages from their GNOME desktop to make it “Privacy by Design”; but for some reason distro introduced in their Repo the worst Linux telemetry “spying on user”-package ever: KDE’s “KUserFeedback”. With also in their Repo KDE’s App “Kate” with forced dependency to KUserFeedback. KDE App “Dolpin” also in Repo but with no dependency to KuserFeedback telemetry.
- ➔ Also, this ambivalent setup is strange because normally in other distros if both KDE Apps are installed or in Repo then both a) have or b) have not this KuserFeedback telemetry dependency.
- ➔ Also see below “Issue” concerning kate installation; KUserFeedback telemetry becomes active; after deleting kate the telemetry package & logfile persist. After delete telemetry the logfiles persist.
- ➔ Because of these inconsistency (first deleting all telemetry and then introducing new KDE telemetry (not implemented conform other distros)) it seems that openSUSE was not focussing while adding these KDE Apps to their GNOME desktop.
- ➔ So distro can be used in DTAP if user blocks packages KUserFeedback(*), dolphin(*) and kate(*). Otherwise to risky because openSUSE can change things on a daily basis.

- ➔ (*) "only" in Repo? there are methods to block specific packages: <[read article](#)> ; for long-term solution ask/tweet distro to remove telemetry package from Repo.
- ➔ Overview & suggestions to distro for improvements: <[read here](#)>

Cat.0 Telemetry

- openSUSE GNOME
see cat.4 and images Annex-1

Cat.1 Telemetry

- N/A

Cat.2 Telemetry

- N/A

Cat.3 Telemetry

- N/A

Cat.4 Telemetry

- ➔ KuserFeedback telemetry in Repo; not installed. see Annex-1 Img2
➔ dolphin in repo; not installed; no KuserFeedback dependency; see Annex-1 Img4. Also see remarks below.
➔ kate in Repo; not installed; with KUserFeedback dependency; see Annex-1 Img 5. Also see remarks below.

Issue – sequence of events:

- ➔ Install kate Img10
- ➔ And KuserFeedback becomes active & logging; see Img11
- ➔ Delete kate; see Img12
- ➔ Kate deleted but KUserFeedback telemetry persist; see Img13
- ➔ Delete KUserFeedback manually; see Img14 & Img15
- ➔ KuserFeedback telemetry deleted but logfiles persist; see Img16

Remarks:

- ➔ Instructed by KDE-org all distros desktops have to create forced dependencies with cat.4 KUserFeedback telemetry if user is to install KDE software like Kate or Dolphin. OpenSUSE complied with "kate" but not(!) with dolphin. This is strange combination because other distros do or don't and give both always equal dependency.
- ➔ In GNOME desktops cat.4 KuserFeedback telemetry is in Repo and can be installed (not advised) and afterwards be removed without freezing the system.
GNOME
 - ➔ There is no(!) cat.1 Telemetry during Installation "Do you want to send your Location? Default is: <yes>. User must type <no>

- There is no(!) cat.2 Telemetry during Installation "Do you want to send distro your configuration specs?"
- There is no(!) cat.2 Telemetry via Menu; in App Settings; option "Privacy"; option Connectivity; parameter "connectivity checking" default is set to <on> with explanation "it could be used to gather technical information about this computer."
- There is no(!) cat.3 Telemetry via Menu; in App Settings; option "Privacy"; option Diagnostics; parameter "send error reports to distro" with explanation "Reports are sent anonymously and are scrubbed of personal data".
- There is no(!) popularity-contest" telemetry installed nor in Repo.

Linux distros categorized:

– [Cat.0 is having no telemetry](#)



Zero telemetry is the reason for companies, governments, organisations and users all over the world to adopt & migrate to "Privacy by Design" Linux.

– [Cat.1 software for location telemetry built-in](#)



As is downloadable .iso has Usage statistics telemetry and is not suitable for Production Environments & Personal use. Installation need change of settings or Command Line Interface CLI & privacy health check after Updates.

– [Cat.2 is Cat.1 & user survey telemetry built-in](#)



As is downloadable .iso has Survey telemetry and is not suitable for Production Environments & Personal use. Installation need change of settings or Command Line Interface CLI & privacy health check after Updates.

– [Cat.3 is Cat.2 & QI collect & analyze user data telemetry built-in](#)



Quality Improvement (QI) via collect & analyze user data built-in downloadable .iso is not suitable for Production environment & Personal use. Installation need change of settings or Command Line Interface CLI & privacy health check after Updates.

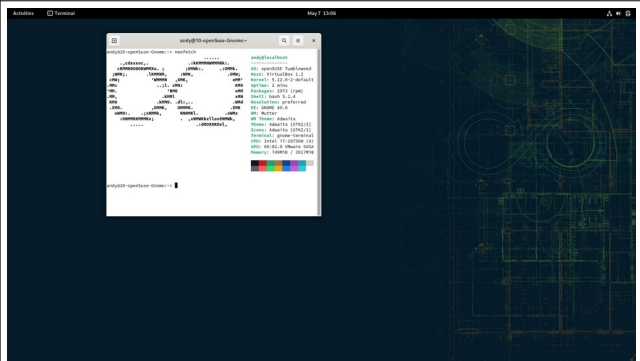
– [Cat.4 above & track/trace user activity & content telemetry built-in](#)



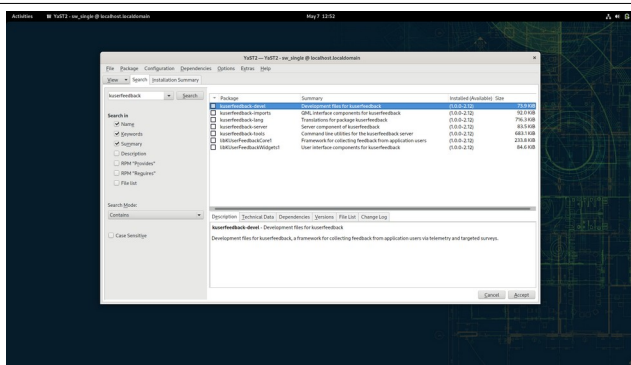
Distro downloadable .iso not suitable for Production Environments & Personal use. Installation has sophisticated non deleteable non stoppable "spy on user" engine. Either built-in (KDE) or in repo's.

Annex-1

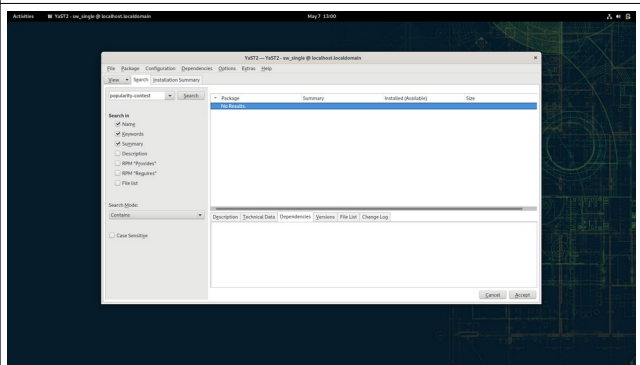
OpenSUSE Tumbleweed desktop GNOME 2021-05



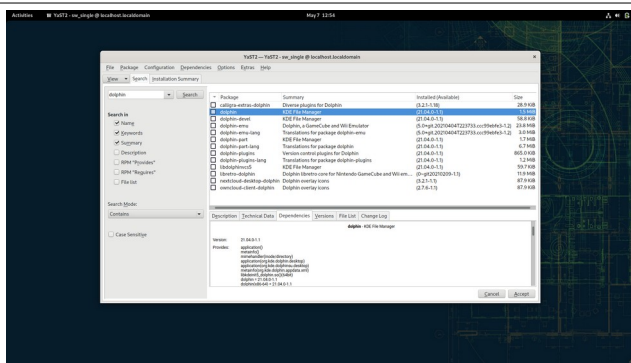
Img1 neofetch



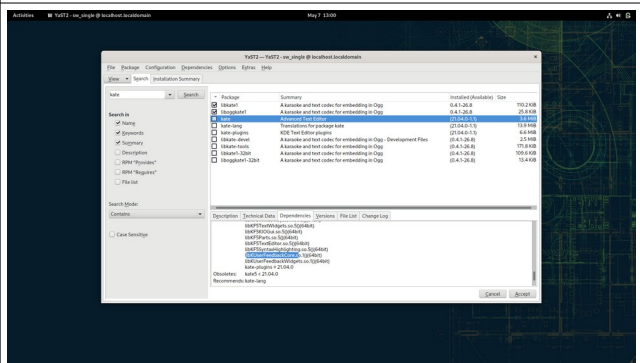
Img2 KUserFeedback telemetry engine in Repo



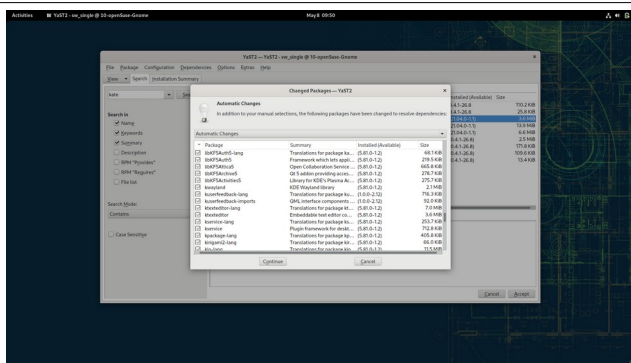
Img3 popularity-contest telemetry not in Repo



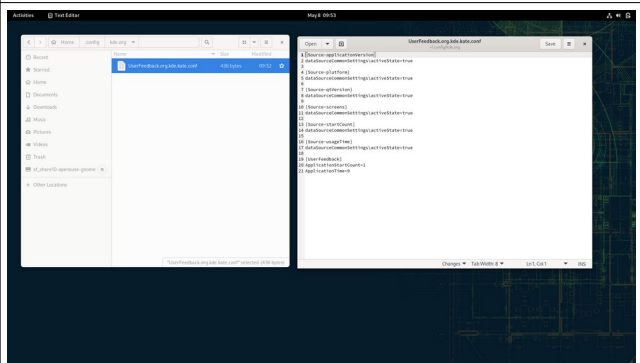
Img4 dolphin in Repo – no KuserFeedback dependency



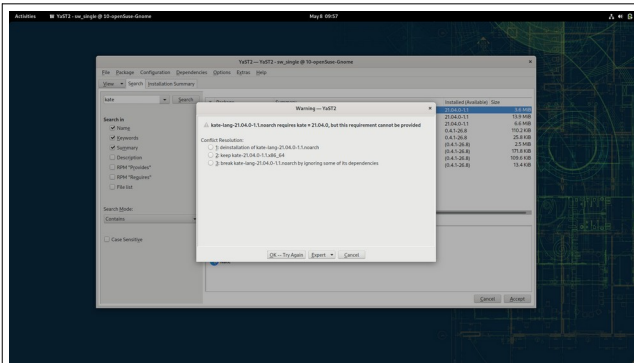
Img5 kate in Repo – with KuserFeedback dependency



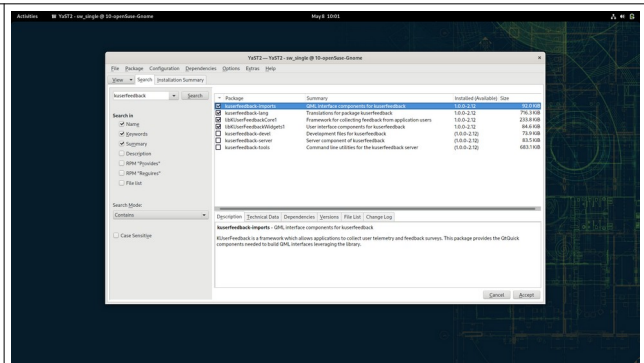
Img10 Install kate



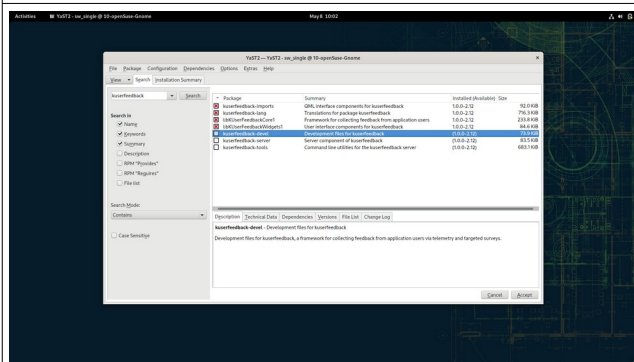
Img11 kate causes KuserFeedback telemetry to be active & logging



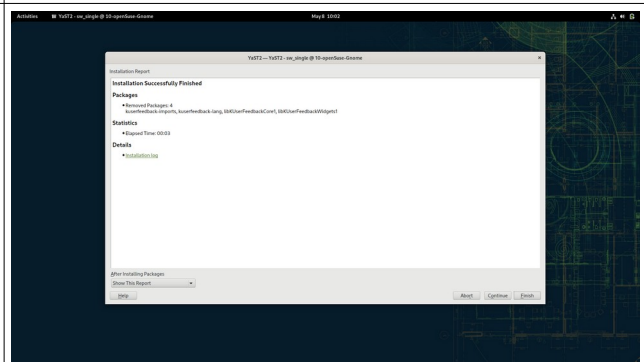
Img12 Delete kate



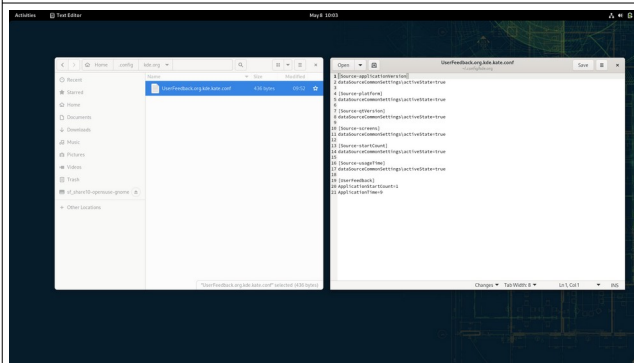
Img13 although kate deleted KuserFeedback telemetry persist



Img14 Delete KuserFeedback telemetry manually



Img15 KuserFeedback deleted



Img16 Although KUserFeedback telemetry deleted the logfiles persist